

MASER



PRODUCT GUIDE 2023



Maser Group History

Established in 1983, the Maser Group has grown into a multinational company with offices in Australia, New Zealand and the United Kingdom. The Maser Group is a diversified distributor of specialised communications solutions, products and systems to a large number of market segments including Broadcast, AV, Home Technology, Fixed Networks, HFC Networks, Industrial, Mobile/Wireless Networks, Public Security & Safety and Defence.

With a growing team, the Maser Group is positioned to offer specialist skills to support its clients including pre and post sales technical support, training, warehousing and distribution. The Group has offices/distribution centres in Fareham, Auckland, Christchurch, Melbourne and Sydney.

Maser excels in its ability to source and supply the most advanced and cost-effective products and systems from key manufacturers worldwide. Our suppliers are carefully selected to ensure access to the latest technology in equipment and systems.

The Maser Group has a strong commitment to customer relations. Our aim is to provide you with the very best possible solutions, the finest products and the highest level of service.



Buy your cable 24/7 with our ecommerce [site](http://www.maser-online.co.uk)

WWW.MASER-ONLINE.CO.UK



Masercable is a high-quality range of products developed in conjunction with our customers and offers quality and performance at a competitive price.

We also offer products sourced from a number of quality manufacturers. With a large stockholding in our south coast warehouse, Maser can supply all of your Cable & Connectivity requirements in a timely fashion.

Our sales team have extensive knowledge and expertise in the industries we serve, offering a friendly proactive service for our customers throughout the UK and Ireland. This catalogue represents a small sample of the products we offer. Please contact us to fulfil any cable, connectivity, telco or lighting requirements you may have.



Maser Communications (UK) Ltd is the Belden Preferred Distribution Partner for Audio, Video and Broadcast products in the UK and Ireland.



To ensure complete signal integrity connectivity, Maser is also the UK Distributor for Trompeter and Coax Connectors who offer a full range of high performance connectivity and patching to suit all of your HD application requirements.



Maser also offer AlphaWire and Dekorona products.



Maser also provide a comprehensive range of Telecommunications and Intelligent Lighting products. Please ask for more details.

Freight & Payment Information

We offer a next working day delivery to UK mainland as standard subject to stock. Timed services are also available on request.

Credit account available on application. Terms & Conditions available on request.

Payment accepted by BACS or Cheque.

Pictures are for illustrative purposes only. We reserve the right to change our products without notice.

NEW 4K PRO VIDEO CABLES

BELDEN

12Ghz Coax, 4K UHD Precision Video Cable, Gas-Injected foam HDPE Insulation Duofoil® bonded to the core and tinned copper braid shield (95% Coverage)

- 12G-SDI cables guaranteed 15 dB RL Limit from 4.5 to 12GHz for 8-11 dB headroom against SMPTE Limit.
- Inner foil bonded to the core on 12G-SDI cables for easier installation with one-piece compression connectors.
- One-piece compression connectors simplify and speed installation.
- New custom mixed formula for gas-injected foam high density polyethylene insulation.
- PVC and LSZH jacket.
- 75 Ohm impedance.
- PVC version is UL rated CMR and C(UL) CMG FT4.



Superior Performance

Engineered specifically to optimize transmission distance, Belden 4K Pro cables exceed the SMPTE Return Loss (RL) specifications for UHDTV providing significant headroom and guaranteeing 15 dB RL from 4.5 to 12GHz. Upgraded manufacturing machinery, new braid design, silver-plated copper conductor and a new polyethylene formula are all design features that contribute to significant RL improvement and an improvement on cable attenuation compared to existing coaxes. Belden 4K Pro Cables have proven interoperability with multiple leading chipset manufacturers.

Reduces Weight, Space and Cost

Belden 4K Pro Cables are capable of supporting 12GHz bandwidth and enables a single-link configuration to transmit 4K. Dual-link and quad-link configurations can be bulky, increase cost and require time consuming measuring for precise cable lengths across all links. Using Belden 4K Pro Cables as a single-link solution saves time and is significantly lighter than dual or quad-link configurations.

Easier Installation

For the 4K Pro Range, the inner foil is bonded to the dielectric to eliminate bunching when installing 1-piece compression connectors. Besides providing increased shield effectiveness, Belden's 4794R's featured tri-shield (foil/braid/foil) design simplifies installation. The outer foil is bonded to the jacket for a quicker, one-step stripping process.

REVCONNECT

BELDEN REVConnect

REVConnect is a brand new RJ45 connectivity system. A single *Reliable* and *Easy* termination method that offers unparalleled *Versatility*; it covers jack and plug, shielded or unshielded, Category 5e through Category 6A. See the reverse side for ordering information.

RELIABLE



What Makes REVConnect Reliable?

REVConnect gets its reliability from a unique termination process featuring a universal 'core' comprised of a cable manager and cap. The cap features eight insulation piercing contacts which create a highly reliable, gas-tight termination proven to increase first pass yields and reduce rework.

How Much More Reliable Is REVConnect?

Voice of customer feedback indicates nearly 5% of terminations need some level of rework ranging from repunching one wire to completely starting over with a new connector. With REVConnect, rework will be reduced to less than 1% of all terminations.

EASY

What Makes REVConnect Easy?

The termination of the REVConnect core is a simple, straightforward process that requires no pair separation! This means, both bonded and non-bonded cables terminate in the same amount of time. On top of that, the single core termination is all the installer needs to know in order to terminate eight different modules.

How Much Faster Is REVConnect?

Though it does depend on what you're comparing to, REVConnect has shown to be over 50% faster than some existing connectors and is, no doubt, one of the fastest connectors to terminate available today.



VERSATILE



How Is REVConnect Versatile?

REVConnect's core technology accepts eight RJ45 modules: UTP jacks (Category 5e through 10GX), Shielded jacks (Category 5e through 10GX), and 10GX Shielded and Unshielded Field Mountable Plugs. A single termination tool is all that is required for the entire termination, including cable prep!

What About Future Generation Modules?

As one could imagine, REVConnect's core technology has potential beyond the current offering. The available eight modules are only the beginning of what we expect to be a revolutionary connectivity platform to support the emerging applications of today and tomorrow.

BELDEN SMPTE ASSEMBLIES

BELDEN SMPTE311 HD CAMERA ASSEMBLY

Now you can add range to reliability as new Belden HD Camera Assemblies enable transmission distances of up to 4,000 metres.



The new Belden hybrid fibre SMPTE311 HD Camera Assembly was designed specifically for high definition (HD) fibre broadcast cameras and is ideal for studio and field camera applications, requiring multiplex audio and video signals and power.

HD cameras provide digital transmission, using a SMPTE311 standard fibre optic cable for connection to the camera control unit. In addition to their exceptional quality, HD cameras are able to transmit all digital bi-directional video and audio signals, one control line, power line and prompter line over extremely long distances - up to 4,000 metres with Belden SMPTE311 HD Camera Assemblies.

IDEAL FOR STUDIO AND FIELD CAMERA APPLICATIONS

Network TV studios, sports arenas, stadiums and production facilities are just some of the venues that will benefit from this new SMPTE311 HD Camera Assembly. Potential applications include interconnect of remote field cameras for Electronic News Gathering (ENG) and Electronic Field Production (EFP).

Cable Construction

- * 2 x single-mode tight-buffered optical fibres (video and audio)
- * 2 x 24AWG (0.61mm) - stranded conductors (control)
- * 4 x 20AWG (0.94mm) - stranded conductors (power)

CAMERA CABLES

BELDEN

7784E



3G HD Triaxial Camera Cable
11mm triax

- Available in Red PVC & LSOH
- Various reel lengths available

BELDEN

7804E



Fibre Composite SMPTE 311M HDTV
Camera cable SMPTE 311M

- 2 s/m fibre – video & audio
- 6 copper core power & control
- Available in PVC, PUR & LSOH
- Various reel lengths available

BELDEN HD COAX TRANSMISSION DISTANCE TABLE

0.3/1.4	1790T/1790TNN	185	152	125	109	95	25	49	34
0.4/1.9	7007R/7007RCH	233	208	189	148	47	33	66	48
0.5/2.4	1865A	209	191	155	134	41	27	55	
0.6/2.6	1855P	301	276	223	193	58	38	76	51
0.6/2.6	1855A ¹⁾	312	284	233	204	65	45	91	62
0.6/2.6	4895R/4895ANNH	325	295	244	212	67	47	94	66
0.6/2.8	1855ENH ²⁾ /1855ECH/ 1855EPU/1855DNN	349	316	261	227	74	52	103	71
0.6/2.8	7008U/7008DNN/7008OCH	349	316	261	227	74	52	103	71
0.6/2.8	4895ENH	363	328	272	234	76	54	107	75
0.8/3.4	1505A ³⁾	413	379	309	266	81	54	108	71
0.8/3.7	1505F	358	323	256	220	67	45	90	60
0.8/3.7	1505A ⁴⁾ /1505ANNH/1505DNN	439	401	330	289	92	64	127	87
0.8/3.7	70081/70081NN/70081CH	439	401	330	289	92	64	127	87
0.8/3.7	4505R/4505ANNH	449	403	329	287	94	66	132	92
1.0/4.3	1695A	520	477	383	331	98	64	128	84
1.0/4.6	1694F	445	400	319	275	85	57	115	69
1.0/4.6	1694A ⁵⁾ /1694ANNH/1694DNN	546	503	408	359	113	78	155	105
1.0/4.6	70082/70082NN/70082CH	546	503	408	359	113	78	155	105
1.0/4.6	4694R/4694ANNH	580	522	426	369	118	82	165	114
1.3/5.7	1794A/1794DNN	694	633	519	451	143	97	194	132
1.3/5.7	4794R/4794ANNH	680	623	523	461	151	105	209	144
1.6/7.0	7732A	785	712	572	492	137	86	172	108
1.6/7.2	7731A/7731ANNH/7731DNN	851	796	637	560	177	119	238	161
1.6/7.2	70084/70084NN/70084CH	851	796	637	560	177	119	238	161
1.6/7.2	4731R/4731ANNH	861	808	649	567	162	126	252	173

The serial digital interconnect standards are designed to operate where the signal loss at ½ the clock frequency does not exceed the approximate loss values listed below. The recommended length values shown are based on typical attenuation values for the cables listed and the following criteria:

Max. length = 30 dB loss at ½ the clock frequency; SMPTE ST 259.

Max. length = 20 dB loss at ½ the clock frequency; SMPTE ST 292 & ST 424.

Max. length = 40 dB loss at ½ the clock frequency; SMPTE ST 425, ST 2081, ST 2082 & ST 2083.

The bit error rate (BER) can vary dramatically as the calculated distances are approached. BER is dependent on receiver design and the losses of the actual coax used. Distribution and routing equipment manufacturers should be contacted to verify their maximum recommended transmission.

1) Includes cables that use 1855A as a constituent through 3 (0) ft, such as 7782A, 7788A, 7789A, 7790A, 7791A, 7792 A, 1855S3, 1855S4, 1855S6, 1283S6.

2) Includes cables that use 1505A as a constituent through 3 (0) ft, such as 1283S3, 1283S5, 1283S6.

3) Includes cables that use 1505A as a constituent through 3 (0) ft, such as 7794A, 7795A, 7796A, 7798A, 7798A, 1505S3, 1505S5, 1505S6.

4) Includes cables that use 1694A as a constituent through 3 (0) ft, such as 1694WR, 7710A, 7711A, 7712A, 7713A, 1694S5, 1694S6, 1694A0.

5) Includes cables that use 1855ENH as constituent through 3 (0) ft, such as 1855EN3, 1855EN5, 1855EN6, 1855EN10.

SATELLITE FEEDER COAX CABLE

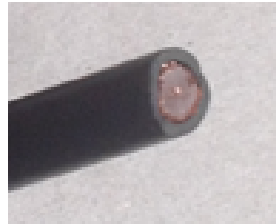
BELDEN

9116E



- RG6 CATV/SAT –
CCA Centre Conductor
- Available in Black and White
 - PVC jacket
 - Supplied on 305m reels
 - OD 6.99mm

MT.6059



- RG59/U
- Standard RG59 Coax
- Black PVC
- Supplied on 100m reels

MF.125.5



- CATV Coax 5 Core Black
- 5 Way with Earth
- Foam dielectric version of the classic CT125
- Supplied on 100m reels

MF125.LSNH.100



- CATV Coax Black
- Foam dielectric version of the classic CT125
- Supplied on 100m reels

MF100-LSNH



- Maser CATV Coax Black
- Supplied on 100m or 250m reels

MF100.250



- CATV Coax Black
- Foam dielectric version of the classic CT100
- Also available in White
- Supplied on 250m reels

MF.100T-125



- CATV Twin Shotgun
- Foam dielectric
- Supplied on 125m reels

PROFESSIONAL AUDIO & CONTROL CABLES

BELDEN

1508ENH



- 24 AWG
- Small analogue audio pair with overall foil shield
- Grey LSOH jacket
- Supplied on 500m reels

BELDEN

1508A



- 24 AWG
- Small flexible analogue balanced audio pair with overall foil shield
- Black PVC jacket
- Supplied on 305m reels

BELDEN

70030



- Analogue balanced pair with overall foil shield
- Grey LSOH Jacket
- Multicore versions available
- Supplied on 500m reels

BELDEN

70051 Series

70052 – 2 Pair
70053 – 4 Pair
70054 – 8 Pair
70055 – 12 Pair
70056 – 16 Pair



- AES/EBU balanced pair with overall foil shield
- Purple LSOH jacket
- Multicore versions available
- Supplied on 500m reels

BELDEN

9451D



- Analogue Shotgun balanced
- Grey/red PVC jacket
- Overall foil screen p/pair
- Supplied in 305m box



A.2466C



- Every wireman should have a reel of this audio/RS232 cable
- 2 pair 22 AWG individual foil shield
 - Grey PVC
 - Supplied on 153/305m reels

PROFESSIONAL SPEAKER & MICROPHONE CABLE

BELDEN

70048



- Massive 4mm of FRNC High purity copper for audio purists
- 2 x 4.0mm conductors
- Mobile/fixed installations
- Black LSOH jacket
- Supplied on 500m reels

MASER 

PS.OF2/2.5-100



- MASERCABLE *ProSpeaker*
- 2x2.5mm of high purity OFC copper in a tough but flexible black PVC jacket
- Supplied on 100m reels

MASER 

PS.OFC4-100



- MASERCABLE *ProSpeaker*
- 4x16 AWG of high purity OFC copper in a tough but flexible green PVC jacket
- Supplied on 100m reels

BELDEN

70047



- 4x2.5mm Halogen Free
- FRNC
- Black jacket
- Supplied on 500m reels

MASER 

PS-OFC4/NH-250



- MASERCABLE *ProSpeaker*
- 4x16 AWG of high purity OFC copper
- Black LSOH jacket
- Supplied on 250m reels

BELDEN

MIC/STARQUAD

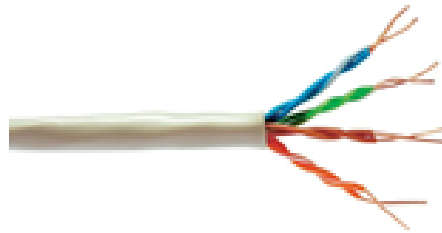


- Super Flex Microphone Cable
- OFC with overall braid
- PVC jacket
- Supplied on 500m reels
- Various options available – please contact Maser for details

DATA CABLES

BELDEN

1583E



- CAT5E UTP
- PVC/**LSOH**
- Solid conductor
- Available in 10 colours
- Supplied in 305m box

BELDEN

1305A



- CAT5E Mobile CATSNAKE Upjacketed, PVC Black
- Ethersound approved
- Supplied on 305m reels

BELDEN

1302E



- CAT6 Mobile CATSNAKE
- CAT6 S/FTP
- Supplied on 305m reels

BELDEN

1303E/EPU



- CAT6A Mobile CATSNAKE
- CAT6A FTP
- Supplied on 305m reels

BELDEN

7965ENH



- CAT6 UTP
- PVC/**LSOH**
- Blue/Grey
- Supplied on 305m reels

BELDEN

7860NBH



- CAT6 FTP
- Overall foil shield
- **LSOH** Grey, Blue or Violet
- Supplied on 305m reels

DATA CABLES

BELDEN

1685ENH



- CAT 6A FTP
- Overall and Individually Shielded
- Grey/Blue
- **LSOH**
- Supplied on 500m reels

BELDEN

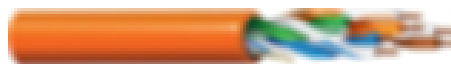
1885ENH



- CAT 7 FTP
- 1000Mhz
- Overall and Individually Shielded
- Grey/Blue
- **LSOH**
- Supplied on 500m reels

BELDEN

2424D



- CAT 6+
- 4 Pair
- U/UTP
- LSZH
- Indoor CPR Eca

MEDIA/DATA/LIGHTING

BELDEN

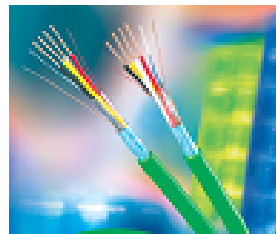
1502RG751000



- Multimedia 2 pair control
- Aqua/Black PVC jacket
- Lutron/Cresnet/AMX/ Type
- Supplied on 305m reels

BELDEN

YE00820 – PVC
YE00906 - LSNH



- Available in PVC or LSNH
- EIB/KNX cable
- Supplied on 100m & 500m reels

 **AlphaWire**
Call us you trust. Service you deserve.

A.1899C



- 2 Pair 16 AWG
- PVC
- Grey Jacket
- Supplied on 152m reels

FIBRE CABLES

BELDEN



GUMTE04

- Universal Tight Buffered Distribution Cable
- LSZH Jacket
- 4f MM OM4
- CRP Dca

FIBRE OPTIC



Loose Tube Cables

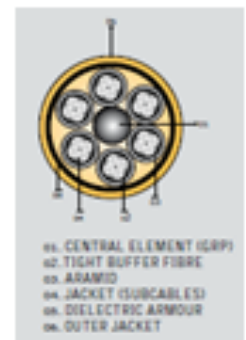
In loose tube cables, the coated fibre "floats" within a rugged, abrasion resistant, oversized tube which is filled with optical gel. Since the tube does not have direct contact with the fibre, any cable material expansion or contraction will not cause stress on the fibre. Much of the external stress placed on the tube also will not be transferred to the fibre. The non-hygroscopic gel prevents water from entering the tube. The loose tube cables are proven the best solution for harsh environment conditions in the outdoors.

Central Loose Tube Cables

The Central Loose tube designs are the economical option for low fibre counts (up to 24 fibres). The cable design offers a smaller overall dimension and ensures a more efficient use of conduit space than typical loose tube. The central tube minimizes the amount of labour and material required to install the cable.

Buffered Fibre Cables

This group of products is characterized by buffered fibres. A thermoplastic material is extruded directly over the acrylate coating, increasing the outside diameter of the fibre to 900 micron (0.9 mm), an industry standard. The tight buffer supplies the fibre with added mechanical and environmental protection, increased size for easy handling and a simple means of adding colour coding for fibre identification. During connectorisation, the buffer is stripped back to an exact length as required by the connector manufacturer. The cables are available for indoor and indoor/outdoor (universal) applications.



1080P HDTV BRILLIANCE COAX 4.5GHZ-3Gb/s 4K RATED

BELDEN

179DT



Very small & lightweight HD Coaxial for increased performance

- Available in 10 colours
- OD 2.9mm, PVC Jacket Option
- Supplied on 305m reels

BELDEN

1855A



Small and lightweight HD Coaxial For when you are running out of space, need to save weight and require flexibility

- Available in 10 colours
- OD 4mm, PVC Jacket
- Supplied on 305m reels

BELDEN

1855ENH



The HD Standard Coax - **LSOH** Jacket. Quality with exceptional tolerances reel after reel

- Available in 7 colours
- OD 4.5mm
- Supplied on 500m reels

BELDEN

1505A



HD Precision for Increased Performance

- Available in 10 colours
- OD 5.92mm PVC jacket
- Supplied on 305m reels

BELDEN

1505ANH



Precision for Higher Performance – **LSOH** Jacket

- Available in 7 colours
- OD 5.92mm
- Supplied on 500m reels

BELDEN

1505F



Amazing Flexibility in a Stranded Double Braid Mobile Construction

- Available in 5 colours
- OD 6.15mm PVC jacket
- Supplied on 305m reels

1080P HDTV BRILLIANCE COAX

4.5GHZ-3Gb/s 4K RATED

BELDEN

1694A



Classic performance - still the best

- Available in 10 colours
- OD 6.99mm PVC jacket
- Supplied on 305m reels

BELDEN

1694ANH



Classic performance - still the best with **LSOH** jacket

- Available in 5 colours
- OD 6.99mm
- Supplied on 500m reels

BELDEN

1694F



Flexible double braided stranded

- Available in 5 colours
- OD 7.01mm PVC jacket
- Supplied on 305m reels

BELDEN

7731A



Super low loss HDTV COAX – the ultimate for long runs

- Available in 10 colours
- OD 10.16mm PVC jacket
- Supplied on 305m reels

BELDEN

7731ANH



Super low loss HDTV COAX with **LSOH** – the ultimate for long runs

- Available in 5 colours
- OD 10.16mm
- Supplied on 305m reels

CUSTOM MADE 10 WAY BELDEN 1855ENH



10 different colour 1855ENH cables with two layers of conductors, separated by PTFE tape and a Thermoplastic Vulcanizate Outer Jacket making this cable robust and waterproof. Each core is terminated with Belden BNC's with strain relief boots; colour coded to match the individual cores. These are also supplied with corrugated gaiters at either end offering full protection for the connectors.

This is a bespoke solution – we are happy to discuss any requirement you have and will work with you to achieve your end goal.

HDTV 3Gb/s – 4.5GHZ VIDEO WECO PATCH PANELS



HDVDP/HDVDPM SERIES WECO PATCH PANELS

Key Features:

Trompeter's new HDVDP and HDVDPM Patch Jacks are designed and engineered to exceed SMPTE 292M specifications for high definition video transmission and connectivity. The normal-thru contact interface design of HDVDP/HDVDPM consists of a self-aligning normal-thru U-slot, two redundant points of contact, an independent applied normal force at each contact point and a mechanical wipe region at each contact interface location. These design attributes provide reliable and repeatable patching/un-patching, resulting in low-level contact resistance stability.

HDVDPT Full-size WECO format, terminated
HDVDP Full-size WECO format, non-terminated
HDVDPMT mini WECO format, terminated
HDVDPM mini WECO format, non-terminated

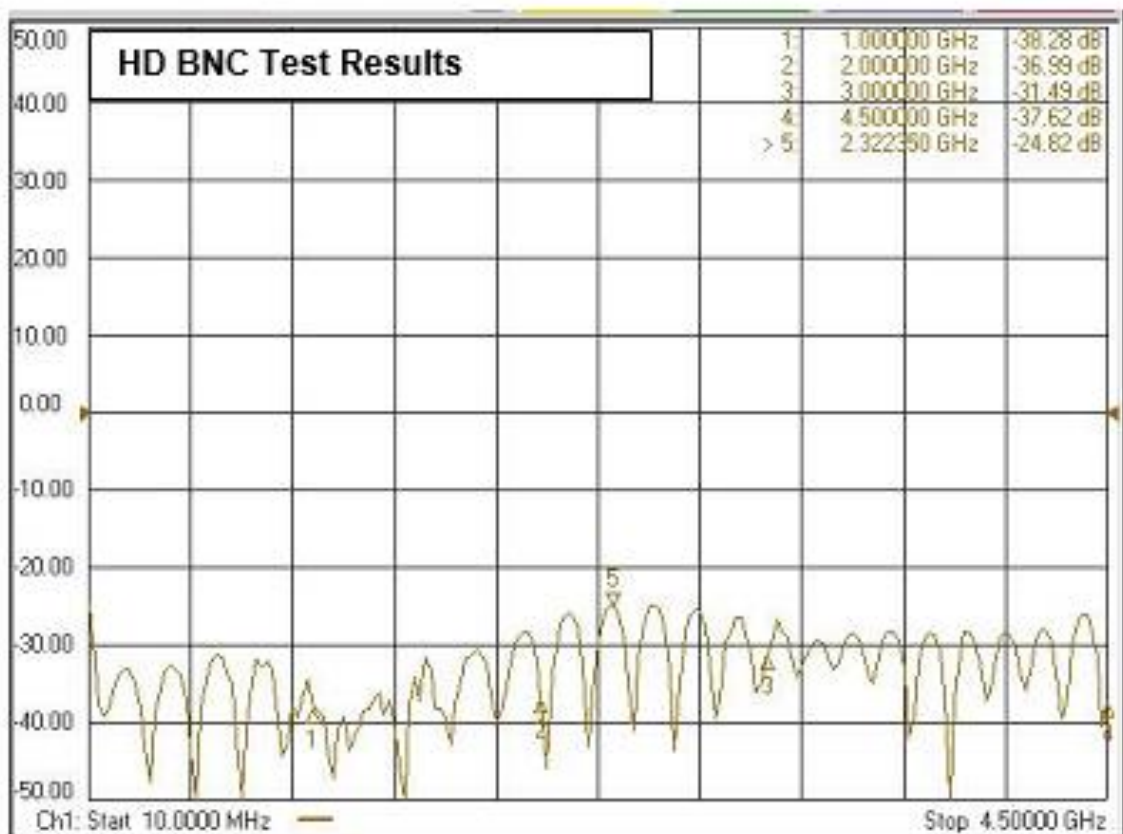
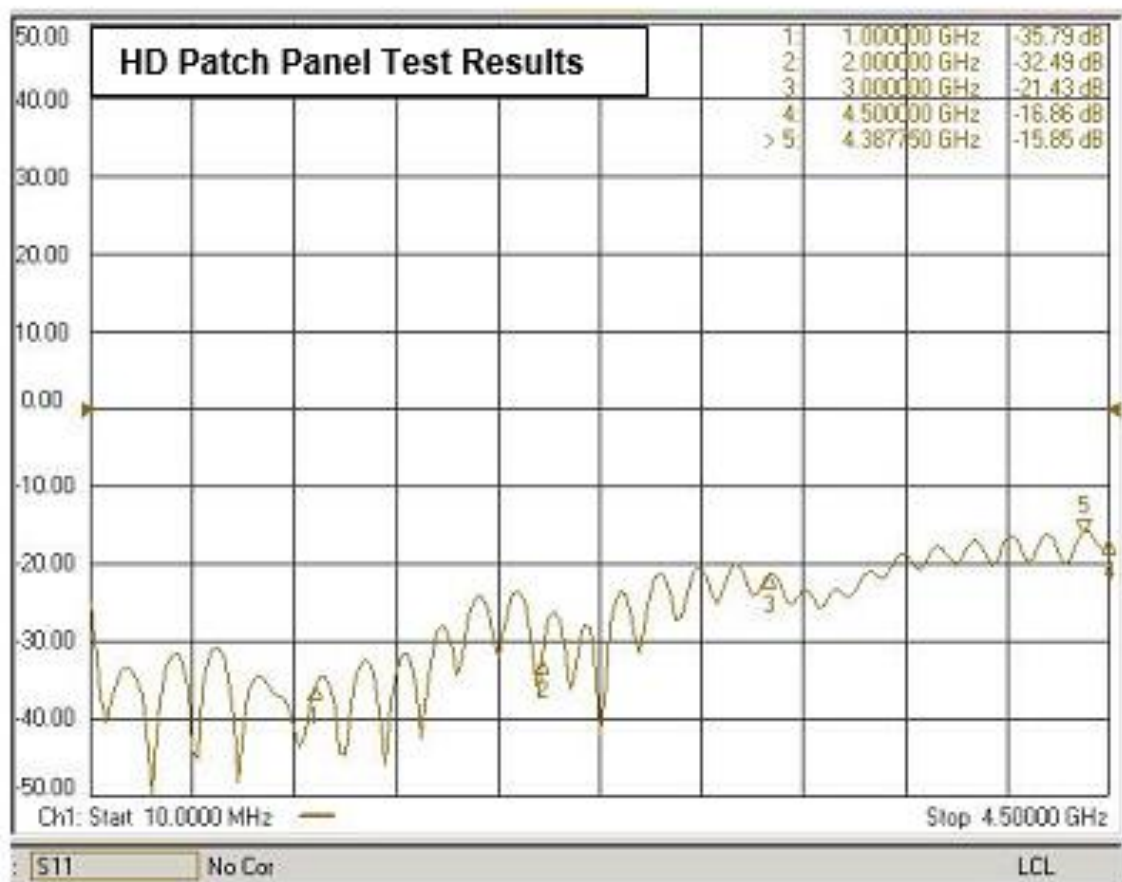
See page 18 for Test Data.

Contact Maser to specify your Trompeter part number

2U 64 Way
Mini WECO HD
Patch Panel



TEST RESULTS FOR HD PATCHING AND HD BNC PRODUCTS



1080P HDTV BRILLIANCE COAX 4.5GHZ-3Gb/s 4K RATED

 TROMPETER



The Trompeter UPL2000 is a classically robust, high frequency, true 75-ohm BNC connector that is designed to handle high bit-rate digital video signal transmissions in conjunction with the low loss coaxial cables used in broadcast applications.

Trompeter design engineers understand the unique problems associated with the combination of high data rate digital traffic and high frequency transmissions. The unique design of the UPL2000 allows for an impedance matched transition through the connector, taking advantage of the electromagnetic effects that are so unique to high frequency transmission lines. The signal is contained within the inside surface of the outer shield through the connector in much the same way that the braid of the coax cable contains the electromagnetic energy of the signal within the cable dielectric itself. This effect is more pronounced as transmission frequency rises, as is the case with DTV and HDTV.

Please see page 31 for HD Cross Reference and Page 18 for Test Data.

HD TV BRILLIANCE 3GB BNC CONNECTORS



Belden HD Brilliance Connectors exceed SMPTE return loss standards, providing excellent headroom and true 75-ohm performance for those instances when Broadcasters need to push the limits. Durability is excellent, with brass construction and patented compression rings ensuring pullout forces exceeding 445 N, depending on the cable. Experts can choose from three Belden HD Brilliance Connector platforms to find the right solution for their broadcast needs.

Type: Locking – 1 Piece Compression

Part No.	Description	Colour Band	Imp. (Ohms)	Pullout Strength (N)	Qty
179DTBHDL	179 Digital Truck BNC Connector	Yellow	75	Exceeds Cable Strength	50
1855ABHDL	22-24 AWG BNC HD Connector	Purple	75	295	50
1505ABHDL	RG59 BNC HD Connector	Red	75	325	50
1694ABHDL	RG6 BNC HD Connector	Green	75	455	50
1794ABHDL	RG7 BNC HD Connector	White	75	485	50

Type: Watertight Locking – 1 Piece Compression

Part No.	Description	Colour Band	Imp. (Ohms)	Qty
1694ABHDLW	RG-6 Watertight Locking HD BNC Compression Connector	Green	75	50

Type: 1 Piece Compression

Part No.	Description	Colour Band	Imp. (Ohms)	Pullout Strength (N)	Qty
179DTBHD1	179 Digital Truck BNC Connector	Yellow	75	Exceeds Cable Strength	50
1855ABHD1	22-24 AWG BNC HD Connector	Purple	75	295	50
1505ABHD1	RG59 BNC HD Connector	Red	75	325	50
1694ABHD1	RG6 BNC HD Connector	Green	75	455	50
1794ABHD1	RG7 BNC HD Connector	White	75	485	50

Type: 3 Piece Crimp

Part No.	Description	Colour Band	Imp. (Ohms)	Pullout Strength (N)	Qty
179DTBHD3	179 Digital Truck BNC Connector	Yellow	75	See Cable Spec	50
1855ABHD3	22-24 AWG BNC HD Connector	Purple	75	330	50
1505ABHD3	RG59 BNC HD Connector	Red	75	320	50
1694ABHD3	RG6 BNC HD Connector	Green	75	400	50
1855ABHD3ENH	23 AWG BNC HD Connector	Violet	75	330	50

CONNECTORS

BELDEN Snap-N-Seal® Connectors

Belden delivers industry-leading products by emphasizing superior quality and easy installation to provide a brand you can depend on to deliver innovation and reliability. By combining the advanced, patented design features of F-Conn® and the traditional, easy-to-use Snap-N-Seal® construction, they have created the industry's best compression connectors as part of the Snap-N-Seal® brand. Contact Maser for assistance in selecting the correct part number for your cable.

F TYPE



FSNS6U

BNC



FSNS59BNCU

F TYPE & BNC



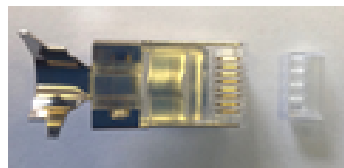
F TYPE - 716SNS1P11HQ
BNC – FSNS11QHBNC

RJ45's



- MT.4001 CAT5
- MT.4001-S Shielded CAT5
- MT.4002 CAT6
- Pack of 100

MT-4002/S



- CAT6 RJ45
- Shielded
- Gold contact plating

R301602000S1



- CAT6A RJ45
- 10Gb Industrial Ethernet
- FTP Shielded

CONNECTORS

<p>SD CRIMP BNC MALE</p>		<ul style="list-style-type: none"> • BNC Crimp Male • Pack of 100 • Contact Maser for part number to ensure correct fit with your cable
<p>HD FEMALE</p>		<ul style="list-style-type: none"> • B2B • Bulkhead • Insulated/Non insulated
<p>F CRIMP MC-7XXX</p>		<ul style="list-style-type: none"> • Crimp Cable Male F Type • Available in all sizes – call sales on 01329 236000
<p>Fibre AX105202=B25</p>		<ul style="list-style-type: none"> • Instant Fibre Connectivity • SC 50/125 MM OM3/4 • Reusable
<p>1.0/2.3</p>	<p>DIN 1.0/2.3 series of RF connectors available in 50 ohm and 75-ohm versions. These connectors are designed to meet the standards IEC 61169-29, CECC22230 and DIN 47297 and are available for the full range of Belden Brilliance Video Coax Cables</p>	
<p>Micro BNC 75 Ohm</p>	<p>Micro BNC 75-ohm connectors offer high performance in a high-density package. The unique patented coupling nut allows the use of a special tool to disconnect the connectors when they are closely mounted. Exceeding the requirements of SMPTE 292M and 424m. With a diameter of only 7.8mm, mounting density is increased by 4 times when compared with a standard BNC.</p>	

STRAIN RELIEF BOOTS

	<ul style="list-style-type: none"> • BNC Boot • Available in 10 colours • Pack of 100 	<p>Available In:</p> <ul style="list-style-type: none"> Extra Large – MT2002B-COL Large – MT2005B-COL Standard – MT2004B-COL Miniature – MT2009B-COL
<p>MT.4001B-B</p>		<ul style="list-style-type: none"> • Strain Relief RJ45 Boot • Available in Black, Blue, Green, Grey, White & Yellow • Pack of 100

COAX
CONNECTORS LTD **CONNECTORS**

Coax Connectors is a leading UK designer, manufacturer and supplier of high performance RF Connectors and offer a wide variety of connectors. Please enquire if the connector you require is not listed below.



Mini BNC 75 ohm Full Crimp Straight Plug.
This plug has gold plated crimp centre contact, the outer contact is nickel plated. Both centre contact and crimp sleeve are annealed for enhanced performance.



Mini BNC Rear Mount Bulkhead Crimp/Crimp Jack.
Mini BNC 75-ohm full crimp straight bulkhead jack This rear mounted jack has a gold-plated crimp centre contact; the outer contact is nickel plated. Both centre contact and crimp sleeve are annealed for enhanced performance.



Micro BNC 75-ohm Straight Crimp Plug.
This true 75-ohm plug is designed for Full HD 1080p applications and general use up to 12GHz. With gold plated centre contact and annealed crimp zones using standard US crimp sizes these connectors offer a long-term durable solution.
** Now Tested to 18 GHz **



Micro BNC 75-ohm Straight Crimp Jack.
This true 75-ohm Jack is designed for Full HD 1080p applications and general use up to 12GHz. With gold plated centre contact and annealed crimp zones these connectors offer a long-term durable solution. ** Now Tested To 18GHz **

TOOLING

BELDEN

CPLCCT-
SLMR/LS59/11



- Compression Tool
- Slim size
- Available as SS59/11 – Steel Tool

BELDEN

BB3PHCT



- Strip Tool for 3 Piece Connectors
- Also available Coax Strip Tool for RG59, RG6 and RGB

 **TROMPETER**

MT.CD3-XX



Crimp Frame

- HD BNC Crimp Frame Tool
- For UPL2000 series
- Die Set also available

 **TROMPETER**

MT-010-0097



Centre Pin

- 8 Point Centre Pin Indentor

BELDEN

BB3PHCT



- Crimp Tool for 3 Piece Connectors with Crimp Die
- Fits all Belden Coax's except 7731A

BELDEN

CPLCRBC-BR



- Full Linear Compression Tool for F, BNC, RCA
- Supplied with adaptor

Fieldsense 2.0

The Fieldsense 2.0 Personal RF Monitor is specifically designed for protecting personnel working near broadcast and telecommunications transmitting antennas from EMF overexposure”.

The Fieldsense 2.0 frequency range of 50MHz – 60GHz, covers all typical Television, FM Radio Broadcast and Mobile Telecommunications services.



Fieldsense 60

The Fieldsense 60 retains all the benefits of the Fieldsense 2.0 – compact size & weight, rugged IP64 enclosure and long battery life from two everyday AAA batteries, but it is also 5G ready.

The Fieldsense 60 with its increased frequency range of 50MHz - 60GHz also covers all the new 5G Broadcast frequencies.



Ultra Compact Small Cell Antennas with uncompromised RF performance

A family of ultra-compact antennas covering all commonly used frequency bands from 617-960MHz, through 1895-2690MHz and up to 3.5GHz and 5GHz bands. The compact designs facilitate use of these antennas in any mounting arrangement on new or existing infrastructure such as buildings or light poles. The types of antennas available include sector, omni and back-to-back designs to suit any planning requirement, in single band and multiband options.

The multiband, multiport designs allow maximum utilisation of

spectrum holdings and infrastructure assets, whilst the single band options are ultra-discreet and even lower visual impact.

Alpha Wireless antennas are designed and engineered for superior quality and high performance. The multiband designs use advanced technology that minimises interference between the various bands operating in the antenna, which leads to better coverage and improved network performance.

Furthermore, the pseudo-omni designs use patented technology that arranges the radiators to maximise 4x4 MIMO performance. All antennas are 100% factory tested before shipment.

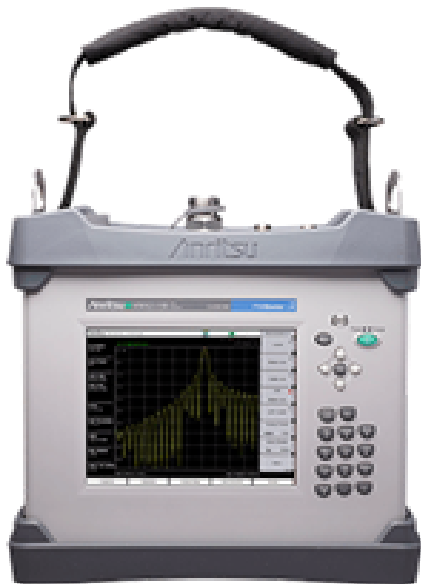
MultiWave SMART ALIGNER

Smart **Aligner**
THE ONLY OTHER ANTENNA ALIGNMENT TOOL



The Smart Aligner is the smallest and most powerful Antenna Alignment Tool on the market. Compact design, exceptional performance, multiple configurations and smart phone enabled makes it the smartest choice for aligning your antennas.

The incorporated GPS technology and sophisticated sensors calculate Azimuth, Tilt Roll, Location and AGL of an antenna under the most demanding conditions.



PIM MASTER™

Passive Intermodulation testing (PIM) is fast becoming a commonly accepted test to ensure the performance of cell systems. As technology advances and data rates increase, system performance is becoming more and more critical. Having the right test equipment will be paramount to maximizing site and system efficiency as subscriber traffic increases.

Anritsu has developed the PIM Master to verify if receiver interference at a cell site is due to an intermodulation product of two or more transmit frequencies, also known as

SITE MASTER™

Introducing the S331P Site Master™ - the lightest, smallest, and fastest Site Master ever. Addressing the market need for broad frequency coverage and high performance in an extremely compact and economical design, the S331P provides wireless operators and contractors, DAS installers, and public safety network installers and maintenance professionals with the first pocket-sized headless cable and antenna analyser that can measure the new LTE-U frequencies.





INNO View 8 PRO Core Alignment Fusion Splicer
INNO VIEW8 PRO is a premium core-alignment splicer offering maximum work efficiency with 6 second splice time and 9 second heating time.

The View 8 Pro is connected to INNO's View Pro Cloud Management System for real-time operation and management online. This innovative cloud-based solution is designed to create the most advanced and yet most uncomplicated splicing

and work experiences ever.

Key Characteristics

- High-Capacity Battery (355 Splice Cycles)
- Precise Fibre Core Alignment Technology
- User Friendliest Interface with 5" Colour LCD Touch Screen
- Active Asset & Work Management Platform
- Double Tapping (Zoom In & Out)



INNO View 12 PRO Ribbon Splicer

VIEW12R PRO, a ribbon splicer with a fully motorized clamp alignment system, it is the most powerful and state-of-the-art ribbon splicer in the market. Its advanced automatic clamp alignment system offers an accurate and dependable ribbon fibre splicing for up to 12 fibres with double-tapping (Zoom in & out) and scrolling to the world's highest magnification of 250x.

The VIEW12R PRO provides maximum work efficiency through the fast splicing & heating time, with universal holder both for 250µm & 900µm single fibre.

Key Characteristics

- High-Capacity Battery (220 Splice Cycles)
- Thermal Stripper Included
- User Friendliest Interface with 5" Colour LCD Touch Screen
- Active Asset & Work Management Platform
- Double Tapping (Zoom In & Out)



CONSULTIX TEST TRANSMITTERS



Test Transmitters

Consultix provides a family of field proof test transmitters that are simply portable RF signal generators yet in a form that is battery-operated and heavy-duty.

The WTX CW test transmitter family is particularly designed for field applications such as In-building site modelling (model calibration), DAS injection / testing, walk-testing as well as outdoor path model tuning- thanks to its broad range of optional power amplifiers.

The WTX Family of CW Transmitters (handheld signal generators) offers a precise RF test signal in a form ranging from WCDMA, LTE modulations to a multi-band and multi-port CW Carrier.

Supporting a broad frequency range from 200 to 6000 MHz in a single unit, hence covering most of wireless bands 2G (GSM), 3G (UMTS), 4G (LTE) as well as CBRS 3.5 GHz and WIFI 2.4/5.8 GHz with a compact handheld device.

The touch screen (in WTX-610 Illuminator) or the keypad and LCD (in WTX-35 series) provide direct user control for maximum ease and handiness that enable efficient and convenient operation.

Consultix WTX Family has the following attributes common in all models:

- Handheld & Lightweight
- High Accuracy
- Battery Operated (WTX-35 series only)
- Ergonomic User Interface
- Modularity to save user investments and enhance logistics cycle
- Soft-key field upgradeable

Transmitter Model	Frequency Range	No. of RF Ports	Maximum Output	Modulations	Weight	User Interface
WTX-05	Band selection of 700, 850, 900, 1800, 1900, 2100 and 2600 MHz	1	20 dBm	CW and WCDMA	700gm	LCD & Keypad
WTX-35-A	300 to 3000 MHz	1	20 dBm	CW	700gm	LCD & Keypad
WTX-35-B	400 to 2700 MHz	Up to 4 simultaneously	15 dBm	CW	700gm	LCD & Keypad
WTX-35-C	60 to 3000 MHz	1	20 dBm	CW	700gm	LCD & Keypad
Illuminator	200 to 6000 MHz	2 (one at a time)	15 dBm (port 1 to 6 GHz)	CW, WCDMA and LTE	2Kg	Touch Screen
HTX	0.5 to 3.7 GHz Amplifier Options	1 to 4	2 to 50 Watt Options	According to Transmitter	5Kg	LCD & Keypad
Amplifier Options	0.5 to 3.7 GHz	1 or 2	5 to 50 Watts		1.5Kg	From TX

CASAMBI INTELLIGENT LIGHTING

Maser offers a full range of LED lighting, emergency lighting and monitoring. We work with the best manufacturers on the market to maximise your energy savings, ensure you are fully compliant with your emergency lighting system and monitor any environmental condition such as energy, flow, vibration, CO2 and many more.

Our systems are installed with market leading controls software from Casambi, who use cutting edge Bluetooth technology to connect your lighting and emergency lighting, so you can monitor the health of your system from anywhere in the world, whilst ensuring the maximum energy savings without compromising on light levels.

Our team of in-house designers will design a complete system, deliver, install and commission it for you, so the worry of having to deal with multiple different partners is avoided. Your system will be up and running first time and supported from cradle to grave.

Please call us to discuss your requirements and a member for the lighting team will be in touch.



Smart LED Highbay Lighting



Cloud Based IIOT Lighting Solutions



Commercial Lighting



Full Turnkey Solutions

MASER



Maser Communications (UK) Limited
Unit 4, Axis Park
Fort Fareham Industrial Estate
Newgate Lane
Fareham
Hampshire
PO14 1FD

Tel: 01329 236000

Fax: 01329 238185

sales@masercomms.co.uk

www.masercomms.co.uk